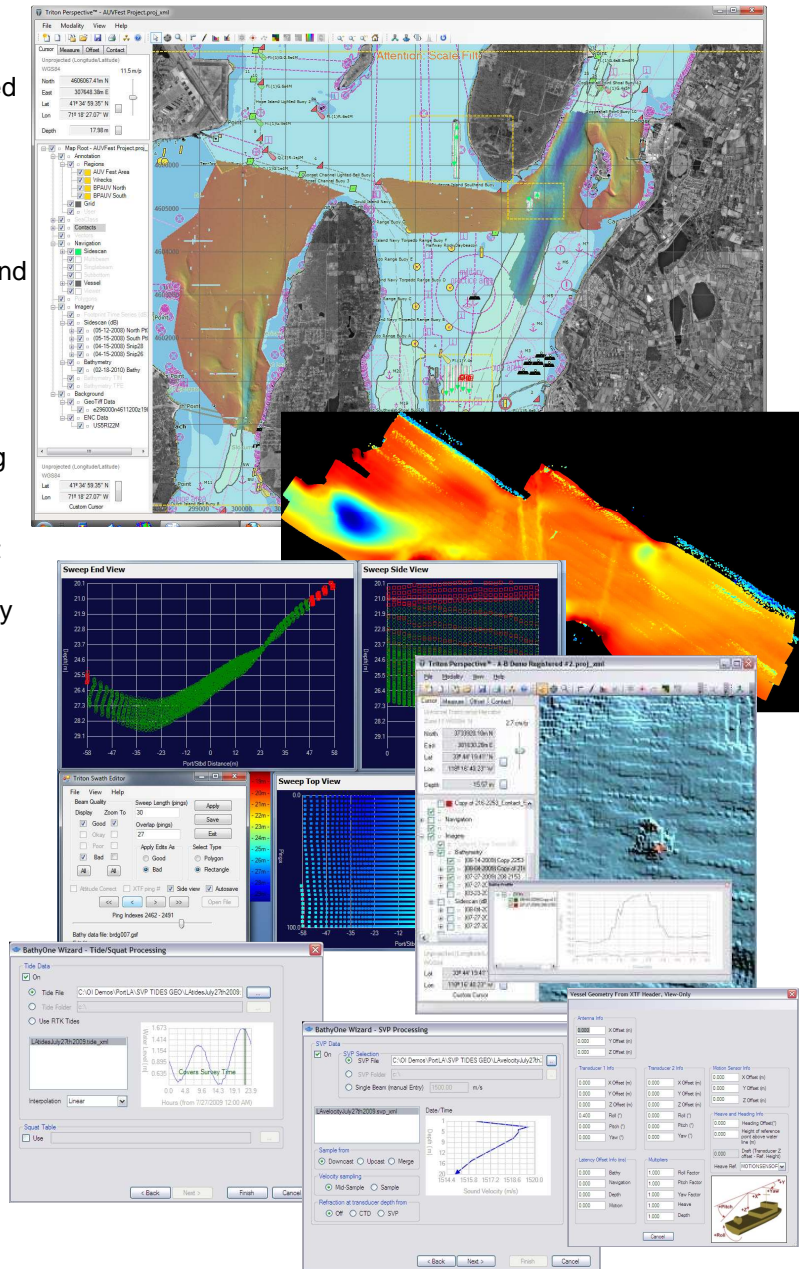


# Perspective-MB™

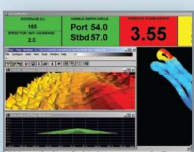
Hydrographic Data Visualization and Production Processing

A complete software tool set for production processing of multibeam and interferometric sonar data. Designed around Triton's unique Perspective architecture, this package is easy to use, versatile, produces processed bathymetric data products of the highest quality, and delivers rapid throughput on very large survey data sets. Includes Triton's Perspective Map, BathyOne, Swath Editor, and A-B modules operating in an integrated environment with the following capabilities:

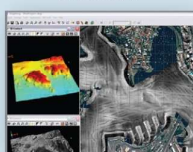
- Perspective Map**
  - Multi-layer, map-based display of geo-coded survey data (vector coastlines, GeoTIFF images, sidescan mosaics, bathy DTMs, contours, soundings, etc.)
  - Immediate access to raw sounding data in Swath Editor with click on survey line
  - Common GIS environment with sidescan and subbottom software, Perspective-SS and Perspective-SB
- BathyOne**
  - Simple drag and drop / wizard-based
  - Fast, multi-threaded, automated processing
  - Navigation processing
  - Tides, SVP, squat, sensor offsets
  - Multi-core, multi-thread architecture for fast DTM and GSF file creation
  - GeoTIFF/ XYZ output of gridded bathymetry
- CUBE**
  - Combined uncertainty estimate of bathymetric surface
  - Horizontal and vertical Total Propagated Error (TPE)
  - Algorithm developed by Center for Coastal and Ocean Mapping (CCOM)
- Swath Editor**
  - Manual editing of sounding data
  - 4D display for fast access and easy interpretation
  - Easy access to all sounding data from double-click on survey line in Map display
- A-B**
  - Automatic differencing of bathy layers
  - Change-based object detection
  - Difference layer for dredge volumes
  - Profile view for object analysis and ID



multibeam



sidescan



seismic



TRITON  
IMAGING®, INC