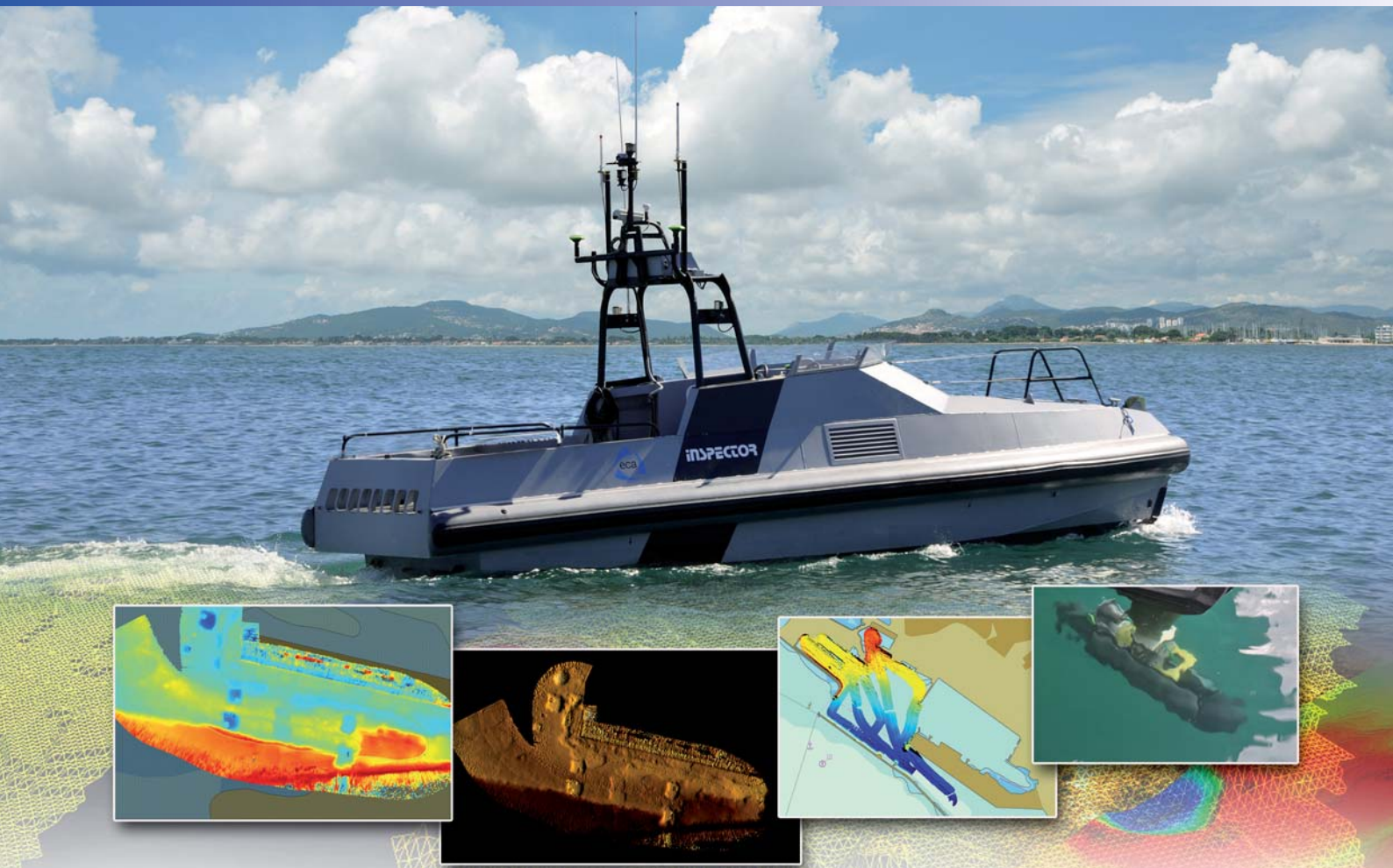




# U.S.V. INSPECTOR MK2

## Imagery & Bathymetric Survey



Features a very shallow draught and one patented rotary bow arm for shallow & very shallow water survey, detection and object classification.

### **Typical Missions**

- Shallow and very shallow water survey and inspection
- Littoral and inshore hydrographic operations
- Harbor and Offshore assets survey and protection
- Object detection and classification

### **Main Features**

- Easy reconfigurable sensor carrier
- Repetitive survey with high navigation accuracy
- High endurance at sea
- High reliability and operational effectiveness
- Enhances security for crews

# U.S.V. INSPECTOR MK2

## Imagery & Bathymetric Survey

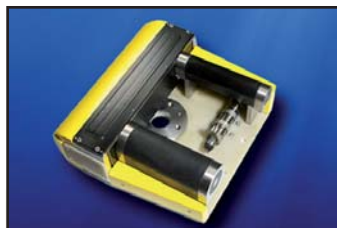
### TECHNICAL CHARACTERISTICS

#### Platform

- **Hull** : Aluminium Rigid Hull
- **Dimensions (L x l)** : 8.40m x 2.95 m (2.55 in transport configuration)
- **Draught** : 0.5m (in transport configuration)
- **Mass** : Up to 4700 kg (including 1000 kg payload)
- **Propulsion** : 2 diesel hydro jets (2 x 170 to 215 kW)
- **Speed** : 0 to 25 kts (station keeping capability)
- **Endurance** : 20 h @ 6kts
- **Operation modes** : Fully automatic, remotely controlled, or manually piloted
- **Complement** : Up to 7
- **Sea state** : operations : SS4 - survivability : SS5
- **Design Approval** : IACS (BV 2000)
- **Rotary bow arm** : Deployment of various acoustic sensors MBES/SSS/ADCP/IMU/SVP



#### MISSION ORIENTED SENSORS



Multi Beam Echo Sounder



Sub Bottom Profiler



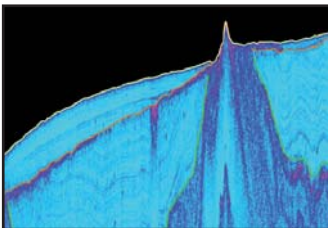
Side Scan Sonar



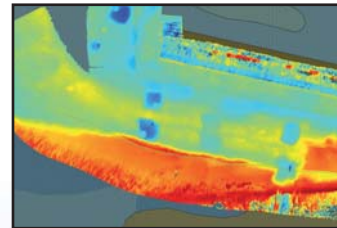
Magnetometer



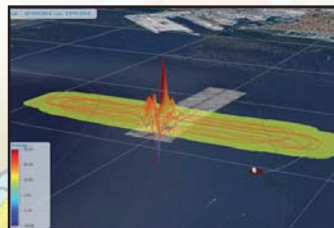
EDGETECH 4600



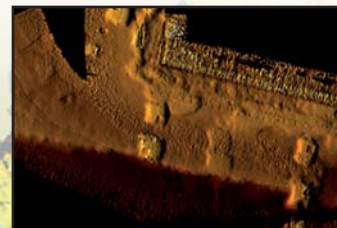
Sediment Analysis



Bathymetry



Magnetic Mapping



Imagery



3D Post-processing

ECA reserves the right to vary the specifications and details contained in this publication