

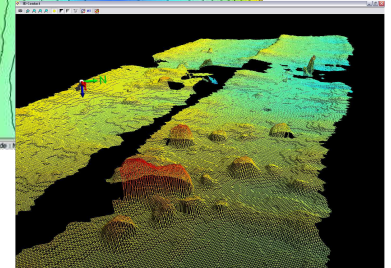
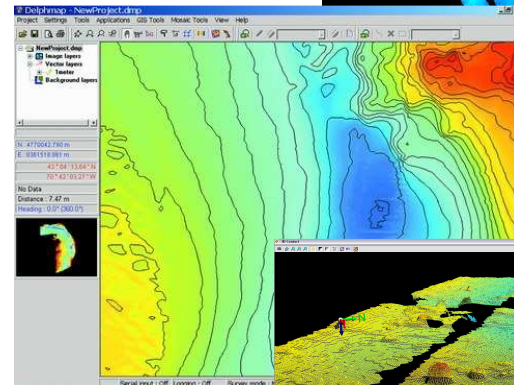
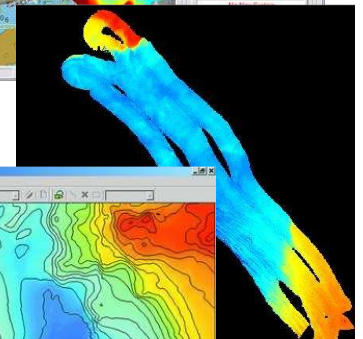
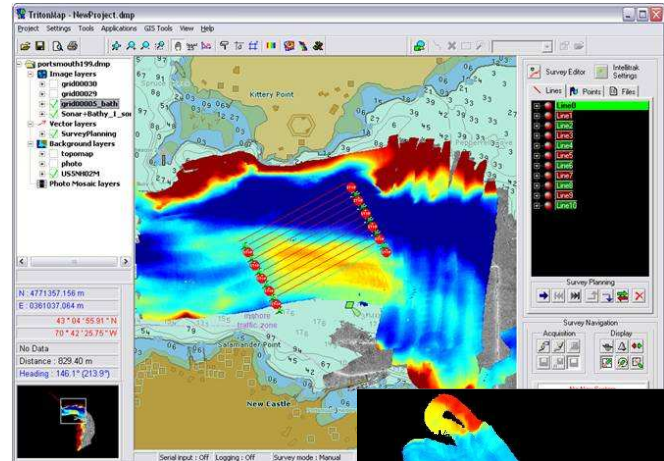
SurveyPro-MB™

Hydrographic Survey Support and Quality Control

Triton's new SurveyPro-MB package is an integrated collection of Triton software modules that supports the planning, execution, quality control, and basic data processing for surveys conducted with multibeam or interferometric sonars. It is designed to be used in conjunction with the Triton hydrographic data acquisition package, ISIS Offshore-MB. SurveyPro-MB provides everything needed to plan and conduct a quality hydrographic survey and perform basic processing on the collected data. Includes the Triton Nav, Real-Time Bathy, BathyPro, Triton Map, and 3DViz modules operating as an integrated unit with the following capabilities:

SURVEY PLANNING AND REAL-TIME CONTROL

- Triton Nav**
Survey Planning
 - Graphical survey line-plan creation
 - Map-based environment integrated with other geo-coded data (GeoTIFFs, DXF coastlines, Bathy DTMs)*Helmsman Display*
 - GPS and gyro input
 - Real-time display: distance to end of current line, start of next line, compass rose, distance and direction off line, course to waypoint, etc.
 - User-configurable alarms to monitor: GPS quality and age, vessel speed, and vessel attitude*Map Display*
 - Ship, fish position, heading and sonar range updated in real-time in Triton Map
- Real-Time Bathy**
 - Bathy data gridded and displayed in real-time during data acquisition
 - Bathy DTM continuously updated with vessel position



BASIC HYDROGRAPHIC DATA PROCESSING

- BathyPro**
 - Off-line basic bathy processing module
 - Process bathymetric data from XTF or grid files
 - Sensor geometry settings
 - Beam suppression
 - Tide and sound velocity processing
 - Map projection specification
 - Gridding parameters specification
 - Grid file (DTM), contours, and soundings creation
- 3DViz**
 - 3D perspective viewing of bathymetry data
 - User-control of eye-point, sun illumination, etc.

- Triton Map**
 - Multi-layer, map-based display of bathy DTMs, contours, and soundings co-registered with other geo-coded survey data
 - Export DTMs as GeoTIFF images or xyz grid files

