



U.S.V. INSPECTOR MK2

M.C.M. - Mine Hunting & Sweeping



Typical Missions

- From Mine Detection to Mine Neutralization
- Shallow & very shallow water operations
- Autonomous or Remotely operated survey
- Fully non magnetic design
- Combined operation with K-STER vehicles :
 - IDENTIFICATION > K-STER I
 - NEUTRALIZATION > K-STER C



Three Operational Modes

- Crew onboard
- Remotely Operated
- Autonomous

U.S.V. INSPECTOR MK2

M.C.M. - Mine Hunting & Sweeping

TECHNICAL CHARACTERISTICS

Platform

- **Hull** : Aluminium Rigid Hull
- **Dimensions (L x l)** : 8.40m x 2.95 m (2.55 in transport configuration)
- **Draught** : 0.5m (in transport configuration)
- **Mass** : Up to 4700 kg (including 1000 kg payload)
- **Propulsion** : 2 diesel hydro jets (2 x 170 to 215 kW)
- **Speed** : 0 to 25 kts (station keeping capability)
- **Endurance** : 20 h @ 6kts
- **Operation modes** : Fully automatic, remotely controlled, or manually piloted
- **Complement** : Up to 7
- **Sea state** : operations : SS4 - survivability : SS5
- **Design Approval** : IACS (BV 2000)
- **Rotary bow arm** : Deployment of various acoustic sensors SSS/IMU/SVP

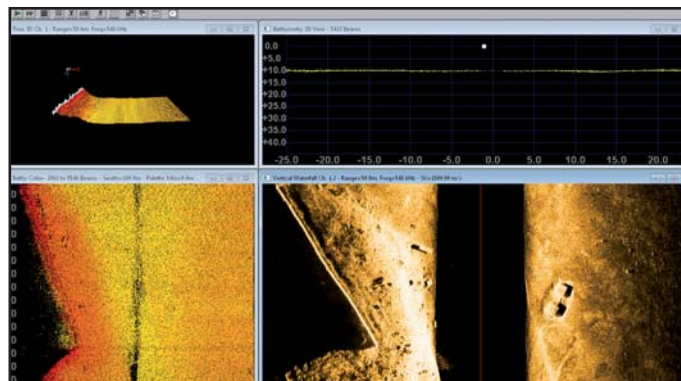
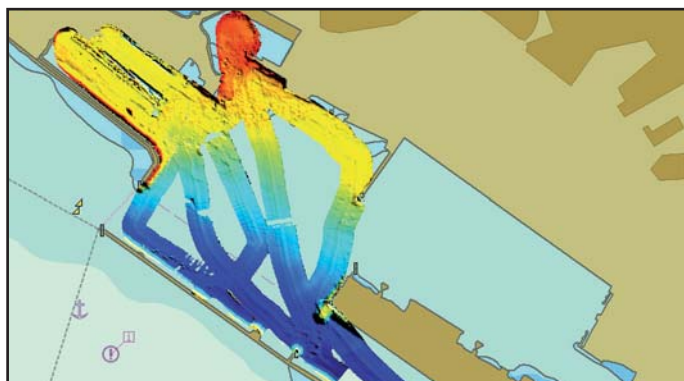


Payloads

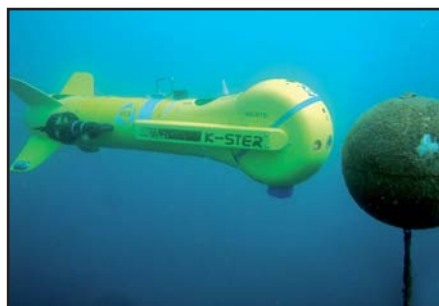
- Interferometric Sonar
- Synthetic Aperture Sonar
- Towed Side Scan Sonar
- Mine Disposal System K-STER
- EOD Divers
- Towed Mine Sweep



Detection / Classification



Identification / Neutralization



ECA reserves the right to vary the specifications and details contained in this publication