

Perspective-SS™

Sidescan Data Visualization and Production Processing

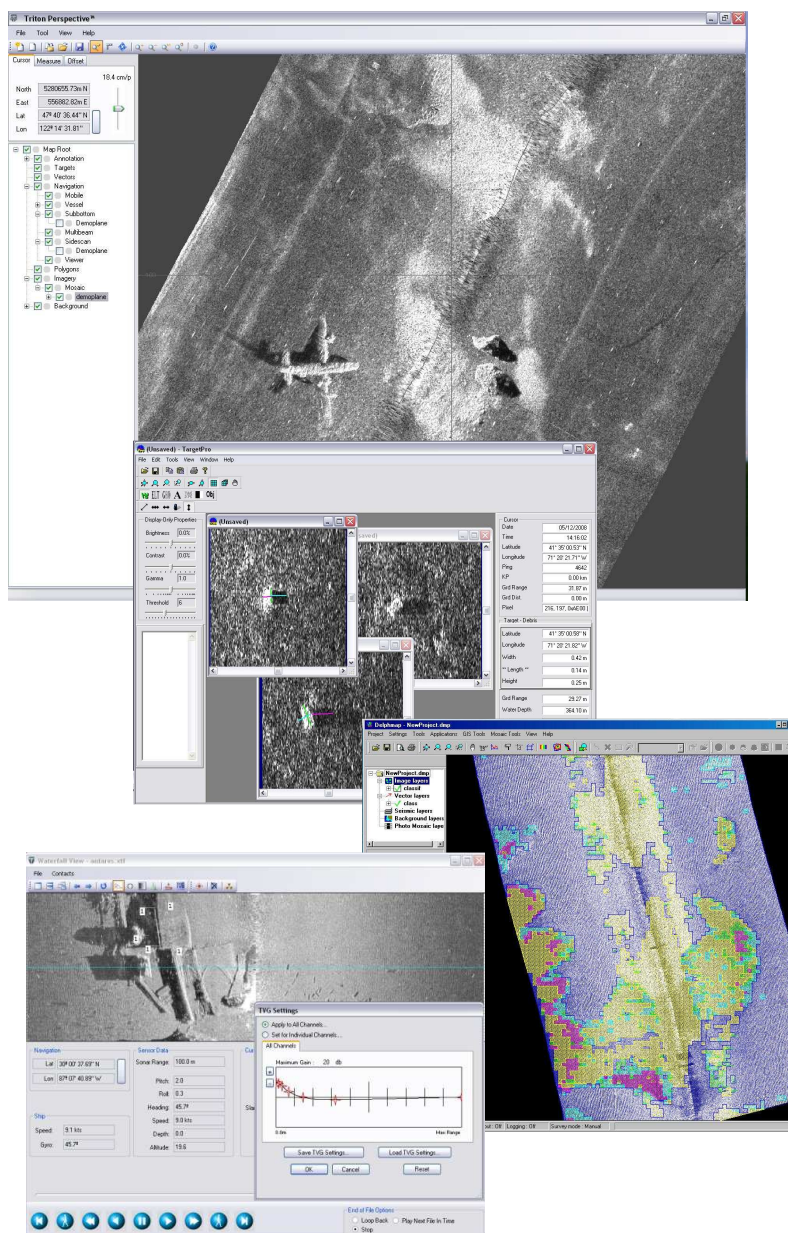
A complete software tool set for production processing of sidescan sonar data. Designed around Triton's unique Perspective architecture, this package is easy to use, versatile, produces sidescan mosaics of the highest quality, and delivers fast throughput on very large survey data sets. Includes Triton's Perspective Map, MosaicOne, TargetOne, and SeaClass modules operating in an integrated environment with the following capabilities:

- **Perspective Map**
 - Multi-layer, map-based display of geo-coded survey data (vector coastlines, GeoTIFF images, sidescan mosaics, bathy DTMs, contours, soundings, etc.)
 - Immediate access to raw sidescan waterfall display with click on survey line
 - Common GIS environment with multibeam and subbottom software, Perspective-MB and Perspective-SB

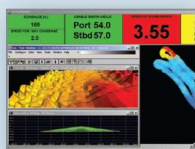
- **MosaicOne**
 - Simple drag and drop and wizard-based operation
 - Navigation smoothing/processing
 - Multi-core, multi-thread architecture for fast mosaic creation
 - dB-based imagery for superior quality
 - Unique fine-tune TVG tool
 - Merge-line and move line tools
 - GeoTIFF output of mosaic images

- **TargetOne**
 - Target acquisition from mosaic or waterfall display
 - Image enhancement, measurement, analysis & classification
 - Export of target images and locations
 - Optional auto-detect (CAD) module

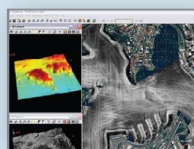
- **SeaClass**
 - Automatically characterizes bottom type using reflectivity data from a sidescan mosaic
 - Neural Net architecture
 - User-selectable training sets
 - Output as region boundary vectors or GeoTIFF image
 - Unique point-classify feature for fast results



multibeam



sidescan



seismic



TRITON
IMAGING®, INC