

VESSEL

	SIMBA 45	SIMBA 50	SIMBA 55
. LAO (m)	45	50	56
. Breadth (m)	9.80		
. Design draught (m)	2.00	2.30	
. Full displacement (T)	280	450	590
. Speed (Max/Cruise/Economical) (kts)	16/12/10		
. Operating range @ cruising speed (NM)	3000	4200	5000
. Endurance at sea (days)	16	20	20
. Complement (berth/crew)	22/17	29/17	41/17
. After Decks (m ²)	180	220	250
. Fore Deck (Heli pad for VERTREP) (m ²)	80	100	



SIMBA 455

system for imagery & bathymetry

Deck equipment

- . Hydraulic deck crane : 5.0 T x 10 m
- . Hydraulic A-frame : 5 T
- . Electric launch boom : 2.5 T
- . Stern ramp with winch : 5 T
- . Towing winch
- . Vehicle maintenance workshop

Scientific Accommodations

- . Command & Information Center for Mission Planning & Monitoring.
- . Hydrographic Laboratory fitted with workstations chart scanner & plotter.
- . Wet laboratory for Oceanographic activities.
- . Redundant 10 GBytes Network.

Platform Survey Equipment

- . Shallow & Deep Water Echo Sounder (SBES)
- . Medium water Multi Beam Echo Sounder (MBES)
- . Shallow water high resolution MBES
- . Acoustic Current Profiler (ADCP)
- . Sub Bottom Profiler (SBP)
- . USBL & ACOMMS
- . Sound Velocity Probe & Motion Reference Unit
- . Thermo Salinometer
- . CTD probe & Water Sampler
- . Seabed Samplers (Corer & Grap sampler)
- . Towed Side Scan Sonar
- . Towed Magnetometer



USV INSPECTOR

SHALLOW & VERY SHALLOW WATER OPERATIONS



MAIN CHARACTERISTICS

- . L: 9 m - W: 2.5 m
- . Weight: 4.5 T
- . Speed: 30 kts
- . Endurance at sea: 18 h
- . Operational radio range: 10 NM
- . Navigation: INS + DGPS

Sensors

- . Motion control
- . Night & Day video camera
- . Multi Beam Echo Sounder
- . Single Beam Echo Sounder
- . Towed Side Scan Sonar
- . Other on request

AUV ALISTER

SHALLOW TO DEEP WATER OPERATIONS



MAIN CHARACTERISTICS

- . L: 5 m - D: 0.7 m
- . Weight: < 1t
- . Speed: 8 kts
- . Endurance at sea: 15 h
- . Operational Depth: 300 m
- . Navigation: INS + DGPS + ADVL

Sensors

- . Video camera with lights
- . Multi Beam Echo Sounder
- . Single Beam Echo Sounder
- . Side Scan Sonar
- . Sub Bottom Profiler
- . CTD or SVN probe

ROV H 300

SHALLOW TO DEEP WATER OPERATIONS



MAIN CHARACTERISTICS

- . L: 0.9 m - W: 0.6 m - H: 0.5 m
- . Weight: 65 kg
- . Speed: 2,5 kts
- . Endurance at sea: unlimited
- . Operational Depth: 300 m

Sensors

- . High resolution colour video camera
- . High power search lights
- . Laser distance acquisition
- . Other on request: sonar, manipulator arm...



ECA SA
262, rue des frères Lumière - 83130 La Garde - FRANCE
Phone: +33 4 94 08 90 00 - Fax: +33 4 94 08 90 70
e.mail: defence@ecagroup.com - www.eca.fr

ECA Communication - sept 2010 - Courtesy: SHOM, GESMA, KLEIN

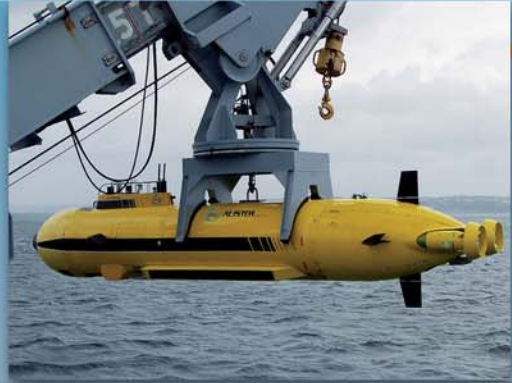


SIMBA 455

MULTI-ROLE VESSEL



- HYDROGRAPHIC & OCEANOGRAPHIC SURVEY
- RAPID ENVIRONMENTAL ASSESSMENT
- BORDER PROTECTION
- SEARCH & RESCUE



Dedicated handling systems for vehicles & towed sensors

Scientific laboratories for mission planning data acquisition & post-processing



360° unobstructed bridge system



WIDE CHOICE OF MISSION ORIENTED VEHICLES



AUV ALISTER

- Oceanographic & Hydrographic survey



USV INSPECTOR

- Shallow water survey & inspection
- Subsea detection



ROV H300 / H1000

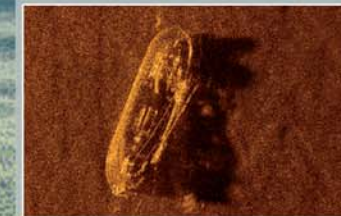
- Hull inspection
- Subsea intervention
- Salvage operations



TOWED SONAR

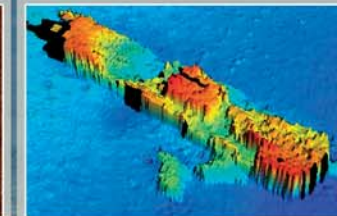
- Subsea survey

DATA ACQUISITION & POST-PROCESSING



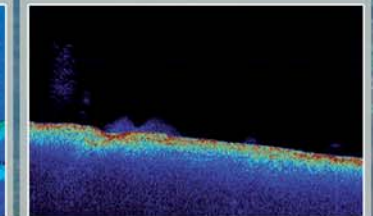
IMAGERY

Side Scan Sonar



BATHYMETRY

Multi-Beam Echo Sounder



SEDIMENT ANALYSIS

Sub Bottom Profiler

working simultaneously

